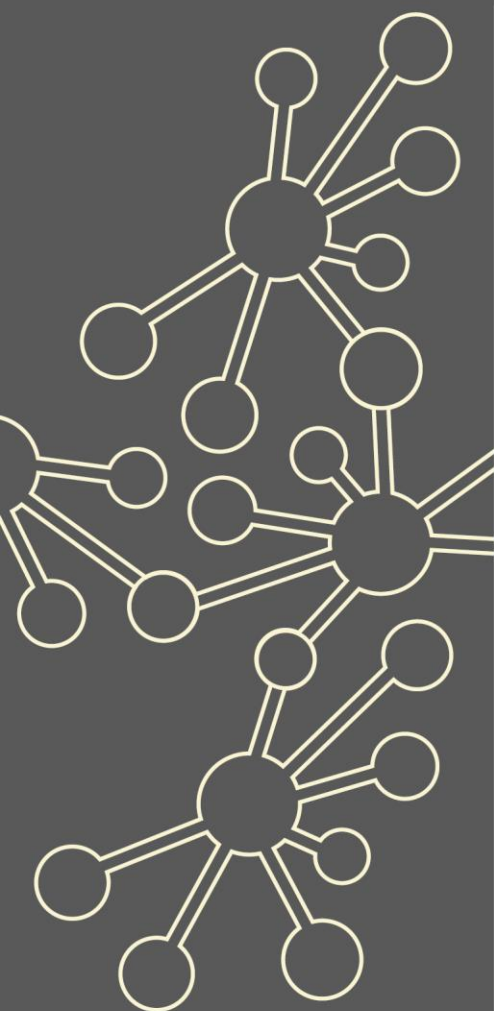


# Years 5-8 Continuity

Maths Hubs Network  
Collaborative Projects  
2021/22

NCP21-19



## Outline

Work Groups in this project aim to strengthen the transition from primary to secondary school by focussing on curriculum and pedagogical continuity over Years 5 to 8. This Work Group will begin in the autumn term.

Following the disruption to education caused by the Covid crisis, this transition is more crucial than ever. A key feature will be understanding how best to prioritise key aspects of the curriculum to help ensure pupils have mastered the fundamental understanding and skills they need to underpin their progression through upper Key Stage 2 and into Key Stage 3.

## Details

### What is involved?

The Work Group will be a blended mix of three days (or equivalent) of online/face-to-face workshops with school-based tasks for participants to complete and reflect upon between each meeting.

A lesson study approach is encouraged where all participants focus on a particular aspect of the maths curriculum and work collaboratively to develop this in their schools. Cross-phase classroom observation and discussion of practice is encouraged wherever possible. Participants are expected to consider ways to develop the approaches explored during the project with other staff in their schools.

### Who can take part?

Participants should be teachers of Years 5-8 in primary, secondary, middle school and all-through schools who have some responsibility for curriculum development, e.g. primary school maths leads/secondary heads of department.

Linked 'families' of schools are encouraged to take part.

### What is the cost?

The Years 5-8 Continuity project is **fully funded** by the Maths Hubs Programme so is **free to participating schools**.

\*See Terms and Conditions of booking

### What are the benefits?

Participants and their schools will:

- ✓ deepen knowledge and understanding of the curriculum across KS2 and KS3 and the expectations of pupils at the end of each key stage
- ✓ understand the approaches which will support pupils as they move from KS2 to KS3, including the importance of consistency of language and representations
- ✓ make use of common approaches, representations and language across phases
- ✓ develop collaboration between primary and secondary colleagues on issues of curriculum and pedagogy, making them part of the school's transition practice (and policy).

## Covid-19 Recovery

Many positive lessons were learnt from online collaboration during Maths Hubs activity in 2020/21. These will be built upon in 2021/22.

As the impact of the pandemic hopefully recedes, the result for Maths Hubs work will be a blend of face-to-face activities and frequent online collaboration.



**NCETM**  
NATIONAL CENTRE FOR EXCELLENCE  
IN THE TEACHING OF MATHEMATICS

Working with

## The wider context

The Work Groups promote teaching for mastery approaches across the KS2-3 boundary to ensure consistency in the pupil experience, thereby meeting the primary and secondary strategic goals of establishing teaching for mastery approaches and encouraging schools in engaging with teaching for mastery support. The Work Groups also meet the Primary goal of ensuring that pupils 'are well prepared for the secondary maths curriculum'.

In particular in 2021/22, teachers will be working without the usual SATs data to support transition, so the Work Group's aim of developing collaboration to secure successful transition for pupils has an added significance. As the situation returns to normal, this enhanced communication and collaboration will ensure that, when data is available, it is used in a more informed way.

## Expectations of participants and their schools

Schools must be able to commit to the full academic year's programme. This involves a total of three days (or equivalent) of a blended mix of online/face-to-face workshops across the academic year, as well as classroom and school-based activity. Participants must also be supported by their school leadership to explore outcomes from the project with other colleagues in their school. See information for Headteacher/Principal below.

## About the Hub

### About the Hub

[Boolean Maths Hub](#) works with schools & colleges to support the continuous improvement of mathematics education for all students in the following local authority districts: Bath & North East Somerset, Bristol, South Gloucestershire, North Somerset and Somerset. The Maths Hubs Programme is funded by the DfE and coordinated by the National Centre for Excellence in the Teaching of Mathematics.

### Information for the Headteacher/Principal - \*Terms and Conditions of Booking

Schools must be able to commit to the full academic year's programme. This includes attendance and active participation in all workshops across the academic year, as well as classroom and school-based activities. Participants will be expected to attend all meetings and, unless there are exceptional circumstances, non-attendance and/or Work Group tasks not being completed may result in a charge to the school of £100.

**What is a Work Group?** [Click here to find out](#)

### Work Group locations/dates

The Work Group will begin in the autumn term. Dates to be confirmed.

**To book your place on this Work Group follow the link [HERE](#)**

If you would like any further information please email [booleanmathshub@clf.cabot.ac.uk](mailto:booleanmathshub@clf.cabot.ac.uk)

